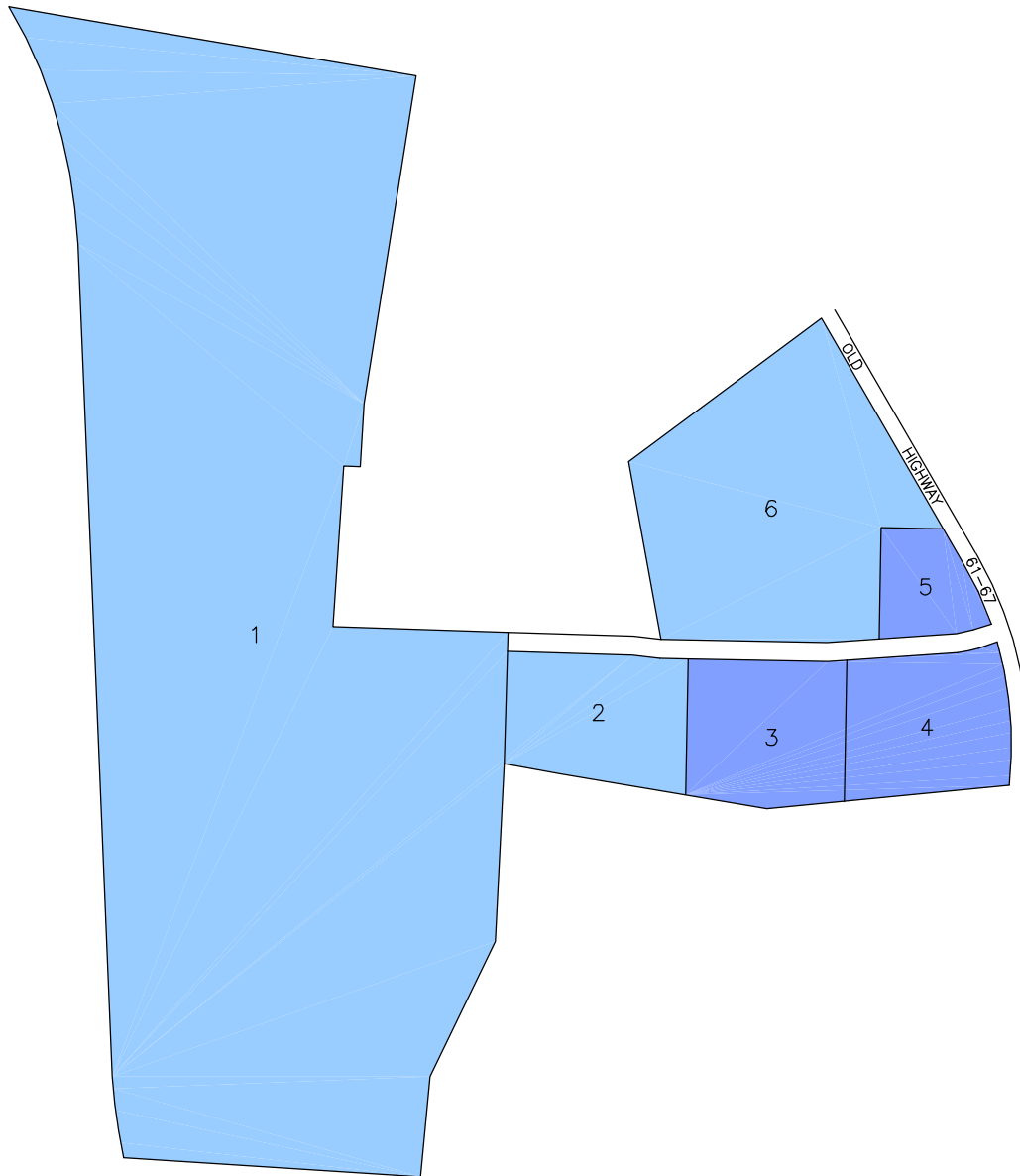


BONNE TERRE INDUSTRIAL PARK



- 1 Vacant ±85.7 Ac.
- 2 Vacant ±5.2 Ac.
- 3 GWS Contractor
- 4 Waterworks Specialties
- 5 Eagle Waterjet/Plattin Tool & Die
- 6 Vacant ±14.8 Ac.